

eniac
JOINT UNDERTAKING

PANORAMA

Ultra Wide Context Aware Imaging

PANORAMA is developing solutions for applications in **healthcare, broadcasting systems and security & surveillance**, all of which face similar challenging issues in the real time handling and processing of large volumes of image data:

- A large increase in amount of data that needs to be processed
- An increase in the complexity of image processing and image analysis algorithms
- Tight real time requirements for image based control systems
- Representation of "holistic" image data



Healthcare

- Smart X-ray systems, less user interaction
- Real-time depth imaging
- Objective metrics for evaluating and optimizing image quality



Broadcasting

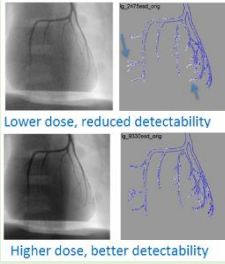
- New cameras for UHDTV
- Automatic color matching, less user interaction
- Stereoscopic imaging



Security and Surveillance

- Multi camera person tracker, less user interaction
- Single gantry vehicle tracker and ALPR
- Smart UHD surveillance cameras (5 & 12Mp)

Healthcare



IQ-metrics and X-ray detectability maps

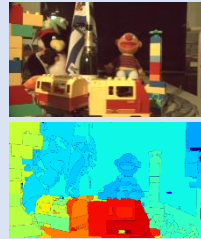


Limited angle tomosynthesis

Broadcasting

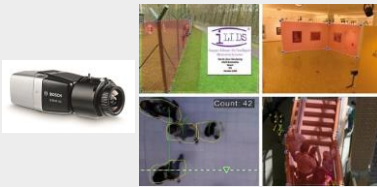


Automatic color matching between cameras

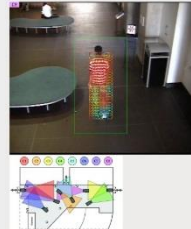


Stereoscopic imaging

Security



Smart and ultra sensitive surveillance camera



Person tracking & 3D room reconstruction

